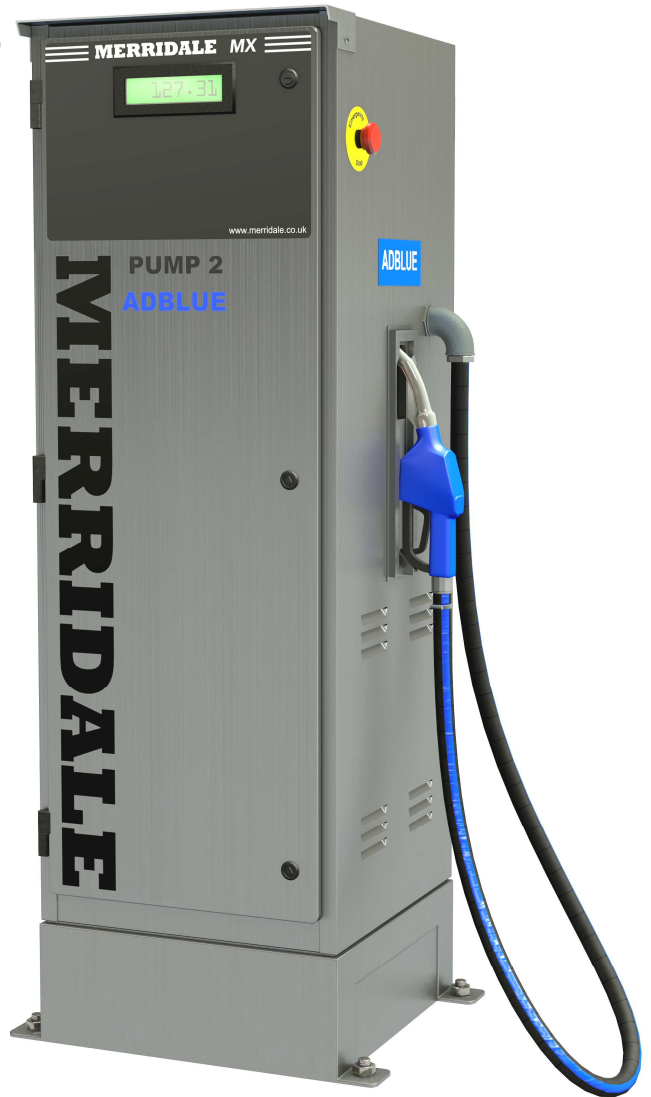


NEW

MERRIDALE[®]

MX-P DEF Pump

- Diesel Exhaust Fluid pump
- Stainless-steel enclosure
- Reliable and accurate



MX-P

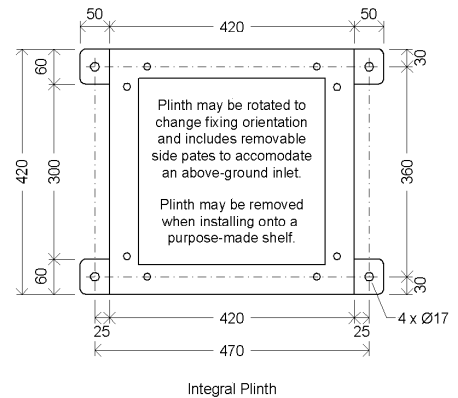
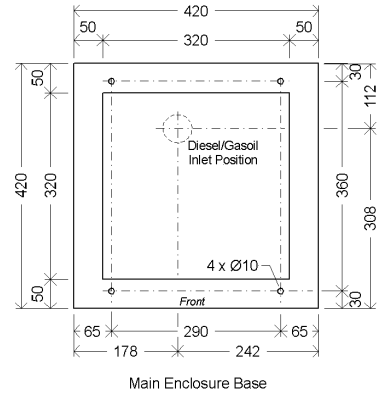
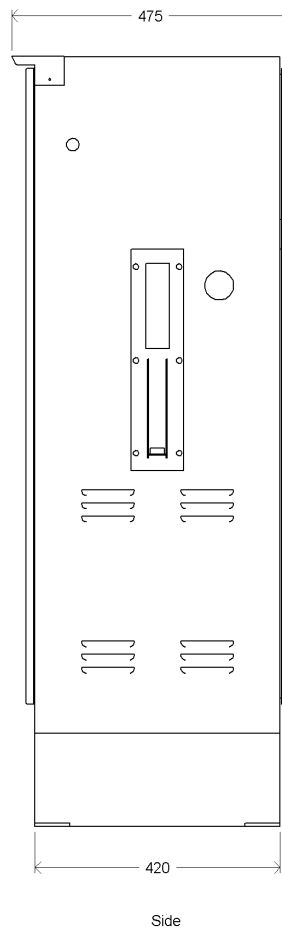
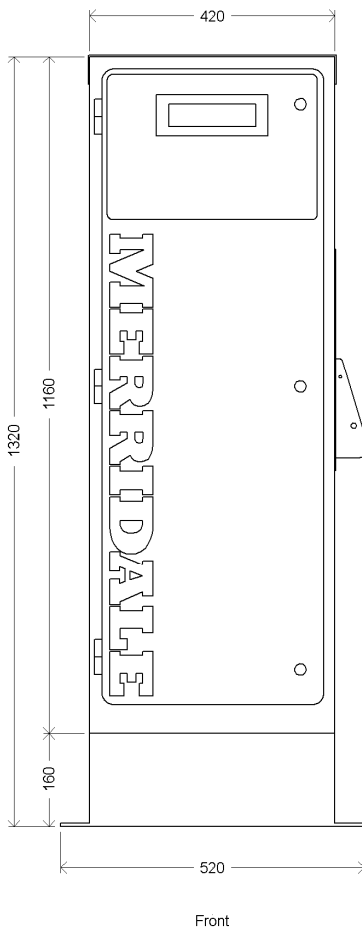
Features

- Suitable for aqueous urea Diesel Exhaust Fluids (AdBlue/AUS32)
- Available as a pump or dispenser
- Robust stainless-steel construction
- Simple to install and maintain
- Long-life design (minimum 10 years)
- Pump delivery speed approx 35 ltr/min
- Electronic calibration
- Metering accuracy $\pm 0.5\%$
- Totaliser viewable on main display
- Fuel management interface



Fuel Management
One Solution
www.merridale.co.uk

Dimensions



Electrical Specification

Voltage	240VAC 50Hz
Max operating current	3A
Recommended Breaker	6A motor-rated MCB

Pump Pressure

Expected normal working pressure		
Nozzle closed	25 – 28 psi	1.7 – 1.9 bar
Nozzle open	16 – 18 psi	1.1 – 1.25 bar

Cable Specifications

Main power	3 core 1.5mm ² PVC SWA
Switched supply to pump	3 core 1.5mm ² PVC SWA
Pulsar from pump	3 core 1.0mm ² PVC SWA
Data cable	4 core 0.22mm ² PVC with overall tinned-copper braided screen

NB Additional pumps must have a separate mains supply, fed from a suitable RCD/MCB distribution board.

Variants



Also available in twin versions.

DS1046-1-1117

MERRIDALE LTD

Merridale Works • Lower Walsall Street • Horseley Fields • Wolverhampton • WV1 2EU • UK

Sales

+44 (0)1902 350700
sales@merridale.co.uk

Service

+44 (0)1902 350701
service@merridale.co.uk

MERRIDALE®
Fuel Management
One Solution
www.merridale.co.uk